

**UNIT 26**  
1378 SQ.FT. + 1149 SQ.FT.



**MAIN FLOOR PLAN**  
AREA: 1378 SQ.FT.  
MASTER + DEN  
1.5 BATHROOMS

**BASEMENT PLAN**  
DEVELOPED AREA: 1149 SQ.FT.  
1 BEDROOM  
FULL BATHROOM

# Signature AT Allard

**LUXURY  
BUNGALOWS**  
104 ALLARD LINK SW,  
EDMONTON, AB



Signature at Allard is a quiet, private enclave of luxury appointed executive bungalow condominium homes in southwest Edmonton. The well designed functional layouts offer

over 2500 square feet of living space with 2 & 3

bedroom plans with

en, double attached garages

and include fully finished

basements with huge recreation

rooms, wet bar and flex space.

These duplex style

homes are perfect for busy

young professionals, empty

nesters and those looking to

downsize from their current

space to a more manageable

maintenance free lifestyle. This

leaves you more time to do the

things you enjoy while still

having the stability and equity of

home ownership. The final phase

of this exceptional development

is now selling and under

construction! Quality-built

maintenance free living

presented by:

**River Valley Custom Homes**

*Only ~~6~~ 2  
Remaining*

**UNIT 27**  
1378 SQ.FT. + 1163 SQ.FT.



**MAIN FLOOR PLAN**  
AREA: 1378 SQ.FT.  
MASTER + DEN  
1.5 BATHROOMS

**BASEMENT PLAN**  
AREA: 1163 SQ.FT.  
2 BEDROOMS  
FULL BATHROOM

SALES CONTACT  
**AL MACKECHNIE**  
780-710-6624  
INFO@RIVER-VALLEY.CA

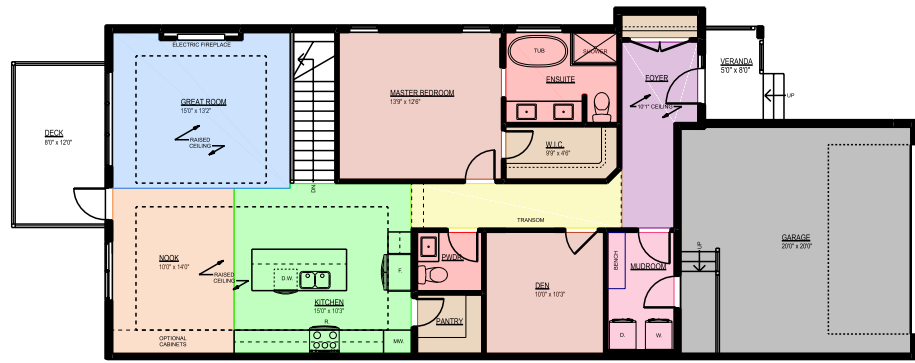


*Signature  
AT  
Allard*

CORPORATE OFFICE: #210 - 3468 93 ST, EDMONTON, AB, T6E 6A4  
EMAIL: INFO@RIVER-VALLEY.CA | WEBSITE: WWW.RIVER-VALLEY.CA  
TEL: 780-432-3344 | FAX: 1-866-896-8039

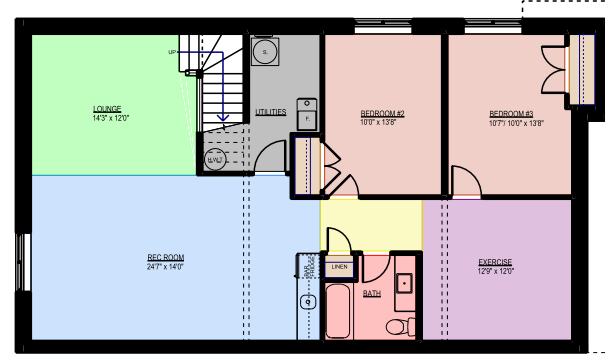
LUXURY BUNGALOWS

**UNIT 22**  
1387 SQ.FT. + 1179 SQ.FT.



MAIN FLOOR PLAN  
AREA: 1387 SQ.FT.

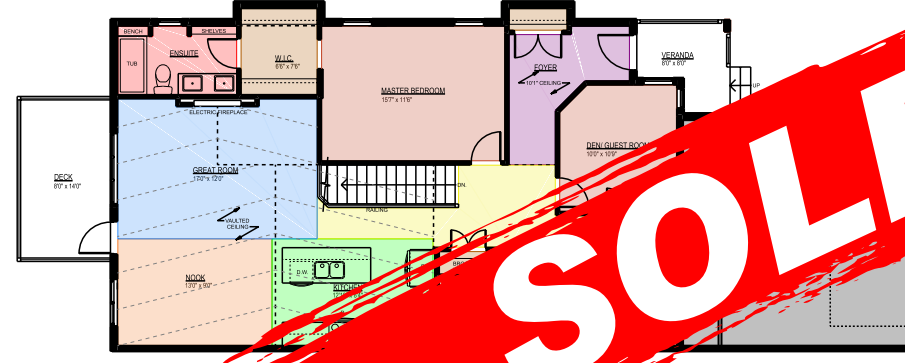
**MASTER + DEN**  
**1.5 BATHROOMS**



BASEMENT PLAN  
DEVELOPED AREA: 1179 SQ.FT.

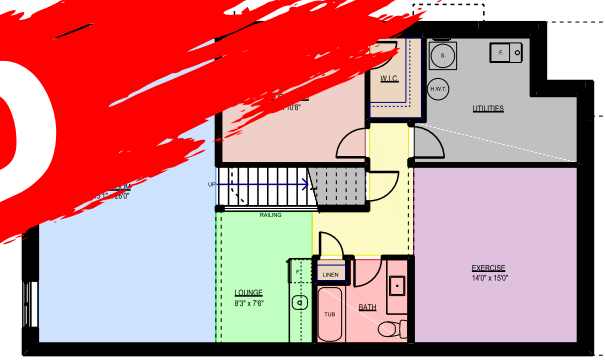
**2 BEDROOMS**  
**FULL BATHROOM**

**UNIT 24**  
1358 SQ.FT. + 1094 SQ.FT.



MAIN FLOOR PLAN  
AREA: 1358 SQ.FT.

**2 BEDROOMS**  
**2 BATHROOMS**



BASEMENT PLAN  
DEVELOPED AREA: 1094 SQ.FT.

**1 BEDROOM**  
**FULL BATHROOM**

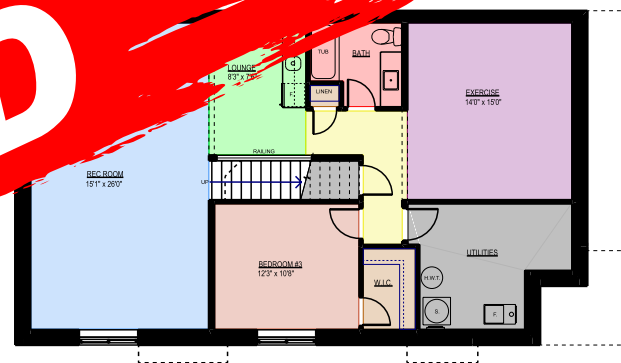
**SOLD**

**UNIT 23**  
1358 SQ.FT. + 1094 SQ.FT.



MAIN FLOOR PLAN  
AREA: 1358 SQ.FT.

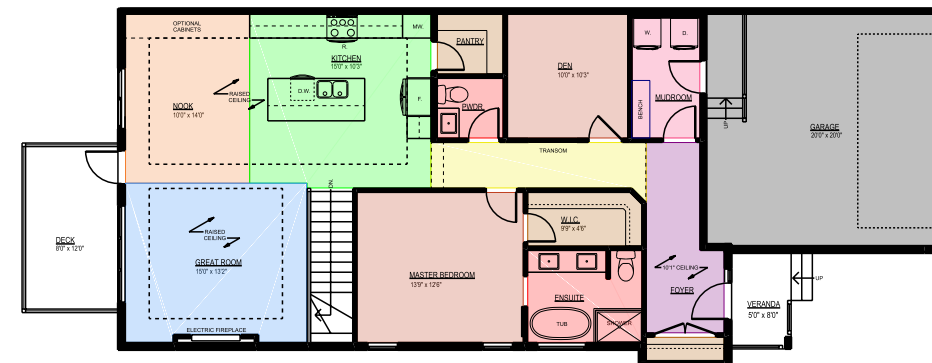
**2 BEDROOMS**  
**2 BATHROOMS**



BASEMENT PLAN  
DEVELOPED AREA: 1094 SQ.FT.

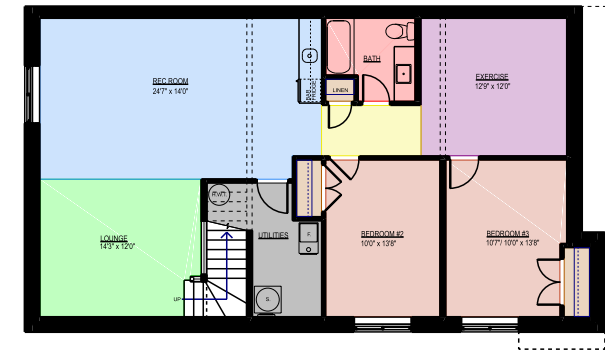
**1 BEDROOM**  
**FULL BATHROOM**

**UNIT 25**  
1387 SQ.FT. + 1179 SQ.FT.



MAIN FLOOR PLAN  
AREA: 1387 SQ.FT.

**MASTER + DEN**  
**1.5 BATHROOMS**



BASEMENT PLAN  
DEVELOPED AREA: 1179 SQ.FT.

**2 BEDROOMS**  
**FULL BATHROOM**

**SOLD**

*Signature*  
AT *Allard*

LUXURY BUNGALOWS

**YOUR NEW HOME INCLUDES:**

- LUXURY VINYL PLANK FLOORING
- MAPLE/OAK STAINED RAILING
- QUARTZ COUNTERTOPS
- FLAT PANEL EUROPEAN CABINETS
- 60" ELECTRIC FIREPLACE
- STAINLESS STEEL APPLIANCES
- AIR CONDITIONING
- FULL LANDSCAPING