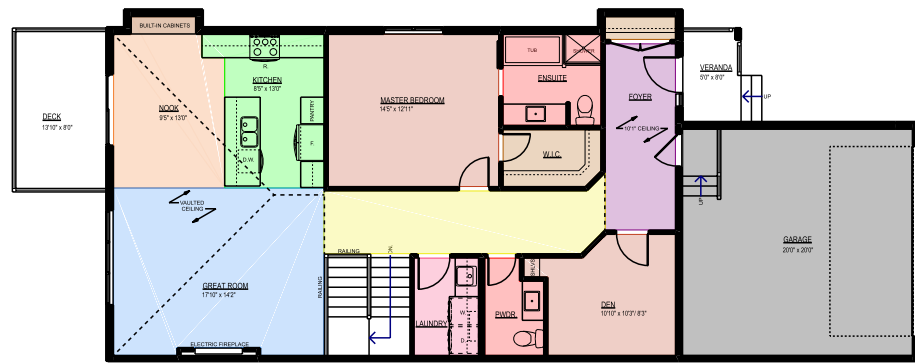
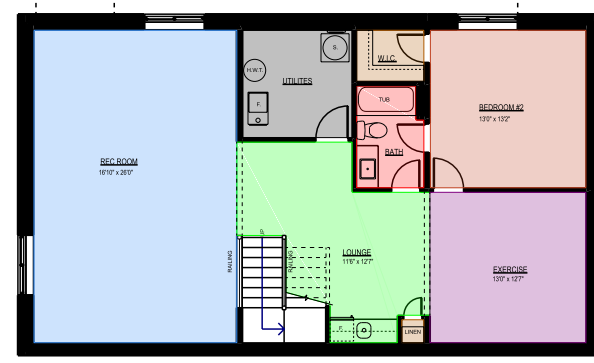


**UNIT 26**  
1378 SQ.FT. + 1149 SQ.FT.



MAIN FLOOR PLAN  
AREA: 1378 SQ.FT.

**MASTER + DEN**  
**1.5 BATHROOMS**



BASEMENT PLAN  
DEVELOPED AREA: 1149 SQ.FT.

**1 BEDROOM**  
**FULL BATHROOM**

# Signature AT Allard

**LUXURY  
BUNGALOWS**

**104 ALLARD LINK SW,  
EDMONTON, AB**



Signature at Allard is a quiet, private enclave of luxury appointed executive bungalow condominium homes in southwest Edmonton. The well designed functional layouts offer

over 2500 square feet of

living space with 2 & 3

bedroom plans with

den, double

attached garages

and include

fully finished

basements with

huge recreation

rooms, wet bar

and flex space.

These duplex style

homes are perfect for busy

young professionals, empty

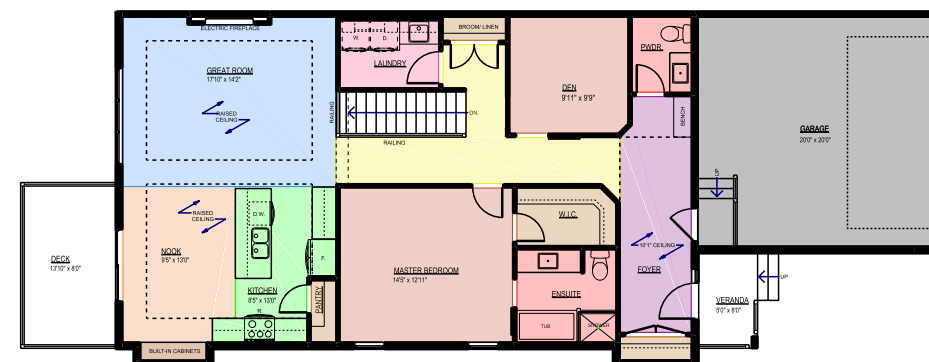
nesters and those looking to

downsize from their current

space to a more manageable

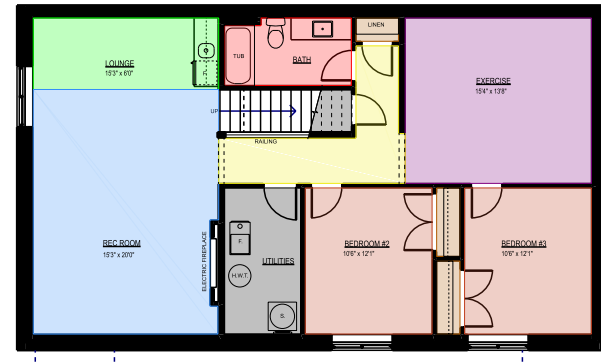
*Only 6  
Remaining*

**UNIT 27**  
1378 SQ.FT. + 1163 SQ.FT.



MAIN FLOOR PLAN  
AREA: 1378 SQ.FT.

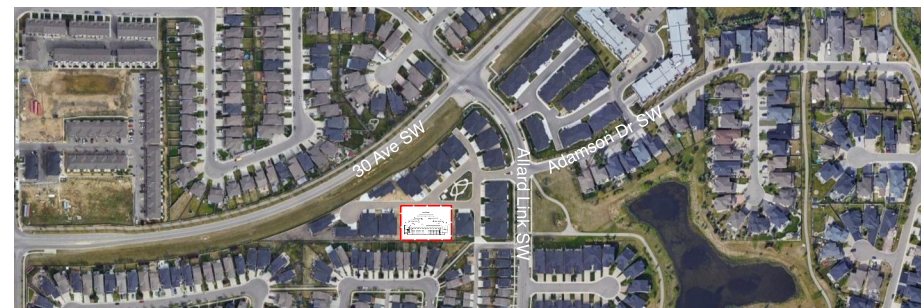
**MASTER + DEN**  
**1.5 BATHROOMS**



BASEMENT PLAN  
AREA: 1163 SQ.FT.

**2 BEDROOMS**  
**FULL BATHROOM**

SALES CONTACT  
**AL MACKECHNIE**  
**780-710-6624**  
**INFO@RIVER-VALLEY.CA**



*Signature*  
AT  
*Allard*  
LUXURY BUNGALOWS

CORPORATE OFFICE: #210 - 3468 93 ST, EDMONTON, AB, T6E 6A4  
EMAIL: [INFO@RIVER-VALLEY.CA](mailto:INFO@RIVER-VALLEY.CA) | WEBSITE: [WWW.RIVER-VALLEY.CA](http://WWW.RIVER-VALLEY.CA)  
TEL: 780-432-3344 | FAX: 1-866-896-8039

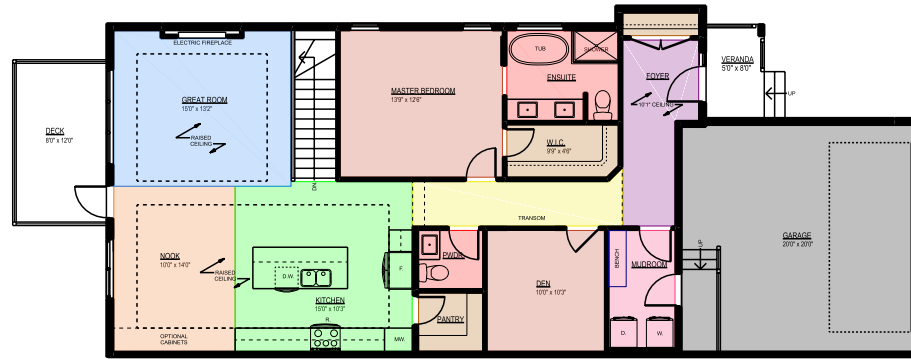
## UNIT 22

1387 SQ.FT. + 1179 SQ.FT.



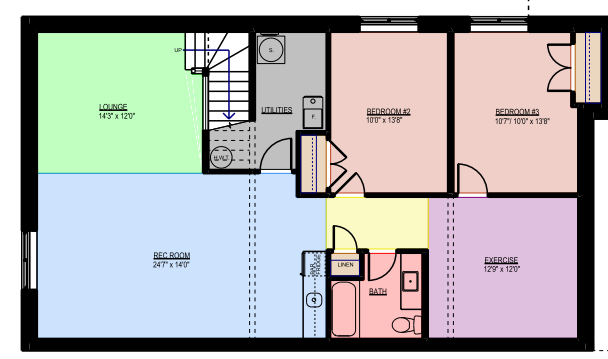
## UNIT 24

1358 SQ.FT. + 1094 SQ.FT.



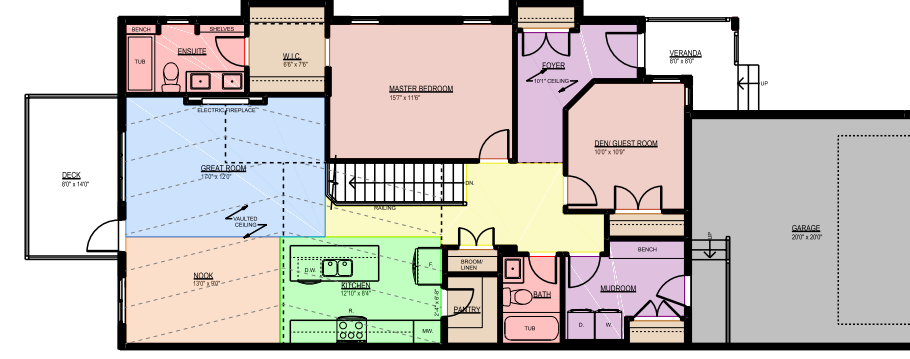
MAIN FLOOR PLAN  
AREA: 1387 SQ.FT.

MASTER + DEN  
1.5 BATHROOMS



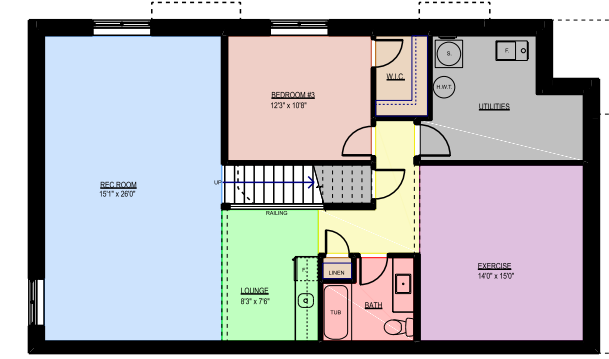
BASEMENT PLAN  
DEVELOPED AREA: 1179 SQ.FT.

2 BEDROOMS  
FULL BATHROOM



MAIN FLOOR PLAN  
AREA: 1358 SQ.FT.

2 BEDROOMS  
2 BATHROOMS

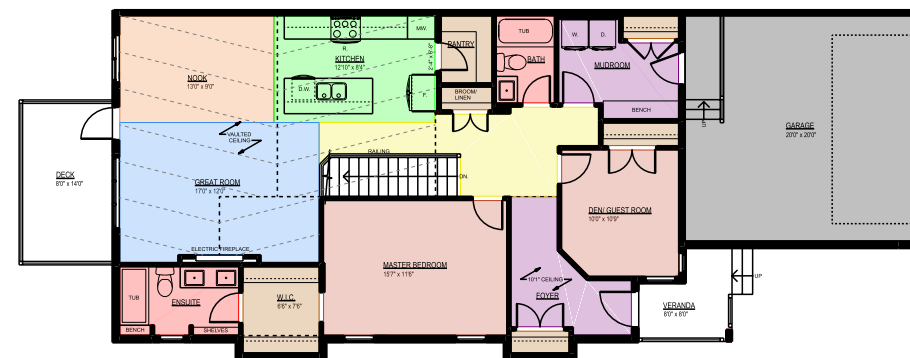


BASEMENT PLAN  
DEVELOPED AREA: 1094 SQ.FT.

1 BEDROOM  
FULL BATHROOM

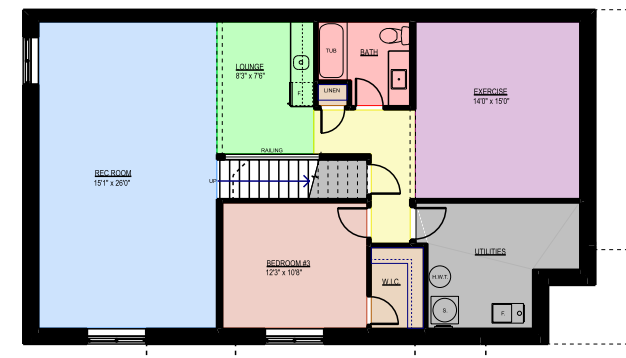
## UNIT 23

1358 SQ.FT. + 1094 SQ.FT.



MAIN FLOOR PLAN  
AREA: 1358 SQ.FT.

2 BEDROOMS  
2 BATHROOMS

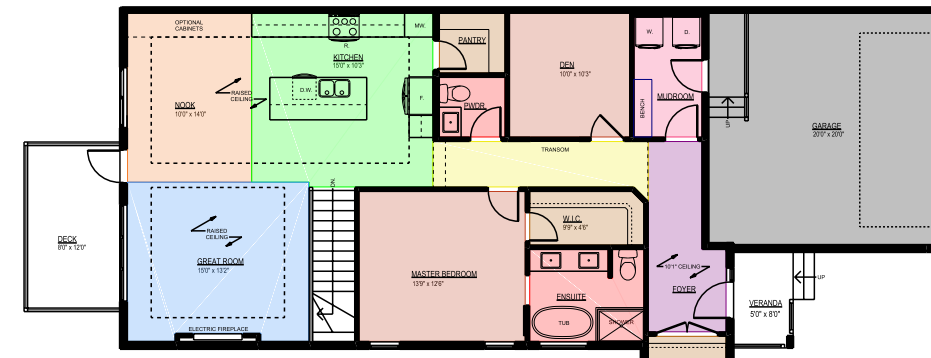


BASEMENT PLAN  
DEVELOPED AREA: 1094 SQ.FT.

1 BEDROOM  
FULL BATHROOM

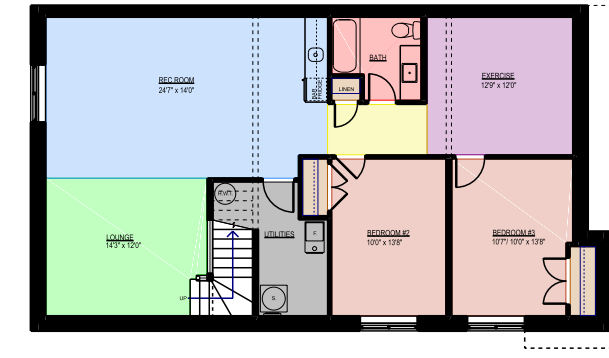
## UNIT 25

1387 SQ.FT. + 1179 SQ.FT.



MAIN FLOOR PLAN  
AREA: 1387 SQ.FT.

MASTER + DEN  
1.5 BATHROOMS



BASEMENT PLAN  
DEVELOPED AREA: 1179 SQ.FT.

2 BEDROOMS  
FULL BATHROOM

Signature  
AT Allard  
LUXURY BUNGALOWS

### YOUR NEW HOME INCLUDES:

- LUXURY VINYL PLANK FLOORING
- MAPLE/OAK STAINED RAILING
- QUARTZ COUNTERTOPS
- FLAT PANEL EUROPEAN CABINETS
- 60" ELECTRIC FIREPLACE
- STAINLESS STEEL APPLIANCES
- AIR CONDITIONING
- FULL LANDSCAPING